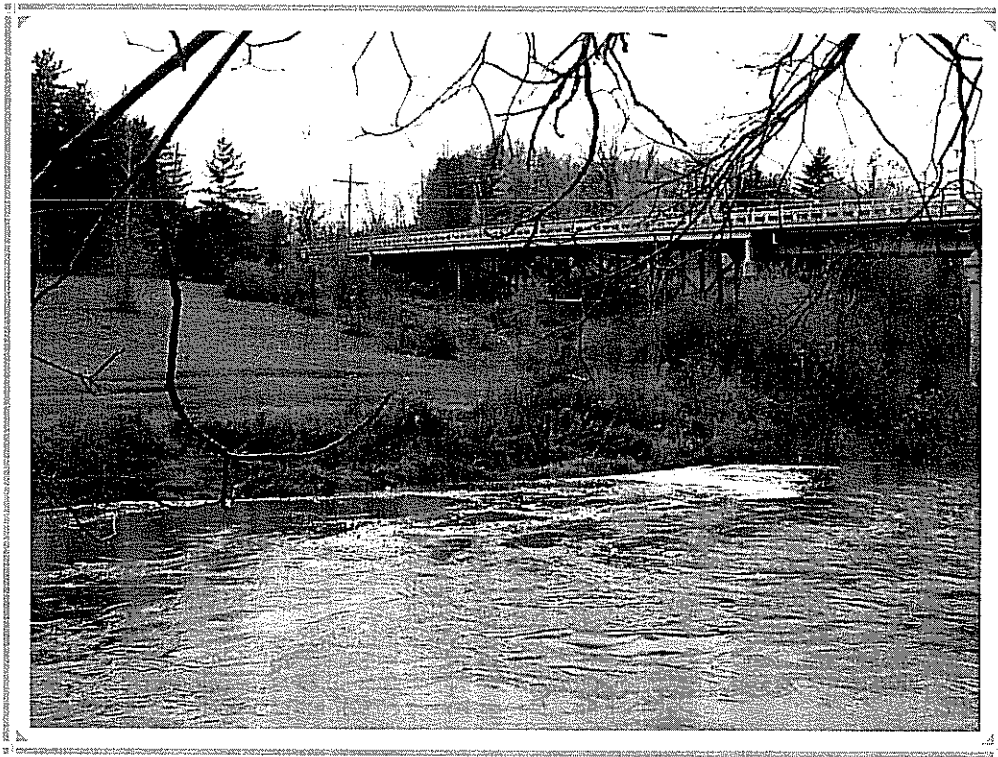


2010

**COUNTY ROAD
IMPROVEMENT PROGRAM**

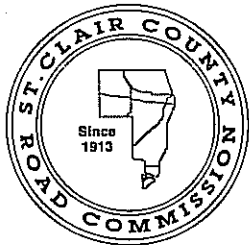


Wadhams Road Bridge—scheduled for replacement in 2010

**ST. CLAIR COUNTY
ROAD COMMISSION**

CONTENTS

Introductory Letter from the Road Board	1
2010 Road Commission Budget	2
2010 Bridge Program.....	6
2010 Primary Heavy Maintenance	7
2010 Primary Surface Preservation Program	8
2010 Local Road System Funding Assistance Program	10
2010 Match Money Program	11
2010 Drain Fund Program	12
2010 Primary Road Programs	13
2010 Local Road Programs	14



COUNTY OF ST. CLAIR

ROAD COMMISSION • PUBLIC WORKS

21 Airport Drive • St. Clair, Michigan 48079-1404

Phone: (810) 364-5720 • Fax: (810) 364-9050

E-Mail: sccrc@mich.com • Website: <http://www.sccrc-roads.org>

COMMISSIONERS: William L. Blumerich, Kenneth C. Foerster, Timothy J. LaLonde

On behalf of all St. Clair County Road Commission employees, we would like to take this opportunity to extend heartfelt greetings to each of you, the residents and motorists of St. Clair County. As we enter the 2010 fiscal year, we continue to face escalating challenges in order to provide quality county road services.

As throughout our society, the economy continues to test the resources of the Road Commission. Decreased transportation revenues and continued financial stress at state and local government levels, coupled with double-digit product price increases, have continued to diminish the funding that is crucial to our maintenance and improvement programs. In order to meet these challenges, the Road Commission has begun exploring initiatives that may be untraditional in our industry. As we continue to develop these and other strategies for our budgetary expenditures and service needs, it is with the recognition that providing service to the motoring public and the residents of St. Clair County is our primary objective.

Our reliance on the established partnerships with our township boards continues to be an important part of our service strategy. As an example of these partnerships, in 2010 five different townships will assist us in implementing eight road and drainage structure projects as part of our Local Road Funding Assistance Program.

Several long-awaited projects will see major progress in 2010. A bid letting for the replacement of the Wadhams Road Bridge over the Black River has been scheduled for March, and the CN Grade Separation project is in the property acquisition phase. Also, the bid for the Speaker Road Bridge was awarded and construction will begin this spring.

The relationships with the local communities, other county agencies, and state and local officials remain a vital component in our efforts to provide our residents with a safe and efficient road system. We are committed to those relationships and hope to expand their scope in order to enhance the efficiency and expediency of the services provided to the public. In 2010, we will continue to work with the local communities and residents to increase our responsiveness and effectiveness. We welcome your comments and suggestions!

BOARD OF COUNTY ROAD COMMISSIONERS OF THE COUNTY OF ST. CLAIR

Timothy J. LaLonde, Chair

William L. Blumerich, Vice Chair

Kenneth C. Foerster, Member

ST. CLAIR COUNTY ROAD COMMISSION
2010 AMENDED BUDGET

	2008 Actual	2009 Amended	2010 Amended
BEGINNING FUND EQUITY: January 1	\$6,110,388	\$5,831,602	\$5,831,602
EXPENDITURES:			
STATE			
Maintenance	\$3,831,548	\$3,000,000	\$3,000,000
Special	\$323,415	\$250,000	\$250,000
TOTAL STATE	<u>\$4,154,963</u>	<u>\$3,250,000</u>	<u>\$3,250,000</u>
PRIMARY			
Construction (roads added to system)	\$0	\$0	\$0
Heavy Maintenance	\$3,403,728	\$200,000	\$34,979,232
Safety Programs	\$8,766	\$0	\$0
Maintenance	\$1,415,406	\$1,724,056	\$1,725,000
Winter Maintenance	\$1,276,416	\$775,944	\$900,000
Bridge Maintenance	\$26,625	\$150,000	\$300,000
Paved Surface Maintenance	\$875,310	\$850,000	\$850,000
Aggregate Rds/250 T per mile	\$576,983	\$375,000	\$375,000
Ditching & CR Culverts	\$197,885	\$125,000	\$125,000
Replace Road Signs	\$4,549	\$0	\$0
TOTAL PRIMARY	<u>\$7,785,668</u>	<u>\$4,200,000</u>	<u>\$39,254,232</u>
LOCAL			
Construction (GASB34 Bike Paths/Roads Accepted into system)	\$557,757	\$0	\$0
Match Money	\$3,049,396	\$1,095,190	\$1,200,000
Maintenance	\$1,666,736	\$1,918,106	\$1,915,000
Winter Maintenance	\$820,391	\$581,894	\$660,000
Bridge Maintenance	\$35,444	\$100,000	\$100,000
Replace Road Signs	\$0	\$25,000	\$25,000
Berm Removal/Drainage Match	\$121,648	\$100,000	\$100,000
Heavy Maintenance	\$0	\$0	\$0
Safety Projects	\$124,111	\$0	\$0
Funding Assistance Program	\$838,897	\$640,763	\$1,000,000
Engineering	\$57,040	\$0	\$0
TOTAL LOCAL	<u>\$7,271,420</u>	<u>\$4,460,953</u>	<u>\$5,000,000</u>
COUNTY BRIDGE FUND	<u>\$680,286</u>	<u>\$907,160</u>	<u>\$0</u>
EQUIPMENT			
Direct	\$1,849,572	\$1,827,000	\$1,830,000
Indirect	\$1,090,409	\$993,000	\$995,000
Operating	\$882,715	\$825,000	\$825,000
Rental	(\$3,853,968)	(\$3,050,000)	(\$3,050,000)
TOTAL EQUIPMENT	<u>(\$31,272)</u>	<u>\$595,000</u>	<u>\$600,000</u>
ADMINISTRATIVE-Total			
Handling	\$937,692	\$950,000	\$950,000
Discounts	(\$11,397)	(\$5,000)	(\$5,000)
Overhead-State	(\$5,975)	(\$5,000)	(\$5,000)
Overhead-County	(\$331,923)	(\$275,000)	(\$275,000)
Overhead-County	(\$272,914)	(\$250,000)	(\$250,000)
TOTAL ADMINISTRATIVE	<u>\$315,483</u>	<u>\$415,000</u>	<u>\$415,000</u>

ST. CLAIR COUNTY ROAD COMMISSION
2010 AMENDED BUDGET

	2008 Actual	2009 Amended	2010 Amended
CAPITAL OUTLAY			
Equipment	\$155,728	\$416,625	\$500,000
Depreciation	(\$726,112)	(\$1,000,000)	(\$1,000,000)
TOTAL CAPITAL OUTLAY	(\$570,384)	(\$583,375)	(\$500,000)
LONG TERM DEBT			
Principal	\$660,000	\$680,000	\$705,000
Interest	\$199,057	\$170,270	\$145,000
TOTAL LONG TERM DEBT	\$859,057	\$850,270	\$850,000
MISCELLANEOUS EXPENSE			
Permit fees and inspections	\$139,336	\$125,000	\$125,000
Accounts Receivable	\$693,738	\$500,000	\$500,000
TOTAL MISCELLANEOUS	\$833,074	\$625,000	\$625,000
TOTAL EXPENDITURES	\$21,298,295	\$14,720,008	\$49,494,232

ST. CLAIR COUNTY ROAD COMMISSION
2010 AMENDED BUDGET

	2008 Actual	2009 Amended	2010 Amended
REVENUE:			
MICHIGAN TRANSPORTATION FUND			
Engineering	\$10,000	\$10,000	\$10,000
Primary	\$7,275,681	\$6,928,540	\$6,582,000
Local	\$3,136,221	\$2,916,880	\$2,771,000
	<u>\$10,421,902</u>	<u>\$9,855,420</u>	<u>\$9,363,000</u>
Economic Development D&F	\$1,134,593	\$0	\$0
TOTAL MTF	<u>\$11,556,495</u>	<u>\$9,855,420</u>	<u>\$9,363,000</u>
MICH DEPT OF TRANSPORTATION			
State Maintenance	\$3,831,043	\$3,000,000	\$3,000,000
State Special	\$323,415	\$250,000	\$250,000
TOTAL MDOT	<u>\$4,154,458</u>	<u>\$3,250,000</u>	<u>\$3,250,000</u>
FEDERAL FUNDS			
Rural Surface	\$429,151	\$0	\$0
Safety Surface	\$215,251	\$0	\$0
Critical Bridge	\$1,174,206	\$828,552	\$0
Enhancement	\$441,083	\$0	\$0
Wadhams Road Bridge Federal/State Funds	\$0	\$0	\$16,616,466
CN Grade Separation Federal/State Funds	\$0	\$0	\$15,883,198
Palms Road Reconstruct Federal/State Funds	\$0	\$0	\$443,430
TOTAL FEDERAL FUNDS	<u>\$2,259,691</u>	<u>\$828,552</u>	<u>\$32,943,094</u>
LOCAL FUNDS			
County Appropriation	\$555,000	\$547,595	\$600,000
County Appropriation - Jeddo Road Bridge	\$45,000	\$0	\$0
County Appropriation - Speaker Road Bridge	\$0	\$52,405	\$0
Township Contributions-Match/Berm	\$2,238,543	\$597,595	\$650,000
Township Contributions-LRFAP	\$523,433	\$348,944	\$500,000
Other Contrib - Emergency Repairs, etc.	\$746,438	\$500,000	\$500,000
Other Local Contrib	\$243,976	\$0	\$0
Township Contributions - Jeddo Road Bridge	\$0	\$0	\$0
Township Contributions - Speaker Road Bridge	\$0	\$26,203	\$0
TOTAL LOCAL FUNDS	<u>\$4,352,390</u>	<u>\$2,072,742</u>	<u>\$2,250,000</u>
BOND PROCEEDS	\$0	\$0	\$0
OTHER REVENUE			
Interest Income	\$108,613	\$100,000	\$50,000
Permit fees & inspection	\$196,949	\$155,000	\$150,000
Other	\$143,958	\$135,000	\$125,000
Accounts Receivable	\$0	\$500,000	\$500,000
TOTAL OTHER	<u>\$449,520</u>	<u>\$890,000</u>	<u>\$825,000</u>
TOTAL REVENUE	<u>\$22,772,554</u>	<u>\$16,896,714</u>	<u>\$48,631,094</u>
ENDING FUND EQUITY: December 31	<u>\$7,584,647</u>	<u>\$8,008,308</u>	<u>\$4,968,464</u>
<i>Less 2008/2009 Designated</i>	<u>(\$1,753,045)</u>	<u>(2,176,706)</u>	
ENDING UNDESIGNATED FUND BALANCE	<u>\$5,831,602</u>	<u>\$5,831,602</u>	
<i>12/31/08 Actual Ending Cash Balance</i>	<u>\$4,536,687</u>		

ST. CLAIR COUNTY ROAD COMMISSION
2010 AMENDED BUDGET

	TOTAL
Michigan Transportation Funds	\$9,363,000
Miscellaneous	\$825,000
Other Contrib - Emergency Repairs, etc.	\$500,000
	\$10,688,000
Long Term Debt	(\$850,000)
Net Equipment Purchases	\$500,000
Net Equipment Expense	(\$600,000)
Net Administration Expense	(\$415,000)
Primary Road Maintenance	(\$4,275,000)
Local Road Maintenance	(\$2,700,000)
Local Road Funding Assistance (SCCRC contrib)	(\$500,000)
Local Berm/Match Programs (SCCRC contrib)	(\$50,000)
Local Engineering	\$0
Miscellaneous Expense	(\$625,000)
Available funds	\$1,173,000

FUNDING SOURCES:

Primary Heavy Maintenance

Michigan Transportation Fund	\$1,173,000
Federal/State Aid - Wadhams Road Bridge	\$16,616,466
Federal/State Aid - CN Grade Separation	\$15,883,198
Federal/State Aid - Palms Road Reconstruct	\$443,430
Fund Equity (2010 Expenses Exceed 2010 Revenues by \$863,138)	\$863,138
Total	\$34,979,232

Program Summaries

County Appropriation

Critical Bridge Program	\$0
Match Money Program	\$600,000
Total	\$600,000

County Bridge Fund

County Appropriation	\$0
Township Contribution	\$0
Federal Critical Bridge	\$0
Total	\$0

Township Match Money

County Appropriation	\$600,000
Township Contribution	\$600,000
SCCRC Contribution	\$0
Total	\$1,200,000

Berm/Drainage Match

Township Contribution	\$50,000
SCCRC Contribution	\$50,000
Total	\$100,000

Local Road Funding Assistance Program

SCCRC Contribution	\$500,000
Township Contribution	\$500,000
Total	\$1,000,000

ST. CLAIR COUNTY ROAD COMMISSION

2010 BRIDGE PROGRAM

<u>APPROVED FOR FUNDING:</u>	<u>RATING</u>	<u>TOWNSHIP</u>
Speaker Road over S.Branch Mill Creek Drain (Construction Scheduled for 2010)	CLOSED	Lynn
Palms Road over Casco Drain (Construction Scheduled for 2010)	None	Casco
Wadhams Road over Black River (Construction Scheduled for 2010 - 2012)	42/66/74	Kimball
Kilburn Road over Plum Creek (Construction Scheduled for 2010)	10/36/60	Grant
Bauman Road over Tinsman Drain (Construction Scheduled for 2010)	None	Columbus
Crawford Road over Schriber Drain (Construction Scheduled for 2010)	18/36/60	Columbus
Marine City Hwy over Marsac Creek (Construction Scheduled for 2011)	None	Casco
Kendall Road over Rattle Run Creek (east) (Construction Scheduled for 2011)	None	Columbus
Kendall Road over Rattle Run Creek (west) (Construction Scheduled for 2011)	None	Columbus
Lakeshore Road over Carrigan Drain Outlet (Construction Scheduled for 2012)	15 Tons	Fort Gratiot
Norman Road over Black River (Construction Scheduled for 2012)	None	Grant

ST. CLAIR COUNTY ROAD COMMISSION
 HEAVY MAINTENANCE PROGRAM
 2010 BUDGET

December 1, 2009

PROJECT	LOCATION	DESCRIPTION	FEDERAL/STATE FUNDS	FUND R.C.	ROAD ACCUM	PROJECT COST
Engineering	Various	Traffic, Survey, Bridge Inspection	\$0	\$200,000	\$200,000	\$200,000
Wadhams Bridge	Over Black River*	Construction (1)	\$14,384,466	\$949,337	\$1,149,337	\$15,333,803
		Construction Engineering (2)	\$2,232,000	\$558,000	\$1,707,337	\$2,790,000
			<u>\$16,616,466</u>	<u>\$1,507,337</u>		<u>\$18,123,803</u>
Port Huron NAFTA Corridor		CN Grade Separation	\$15,883,198	\$47,655	\$1,754,992	\$15,930,853
Palms		Reconstruction	\$443,430	\$281,146	\$2,036,138	\$724,576
		Total Primary Heavy Maintenance	<u>\$32,943,094</u>	<u>\$2,036,138</u>	<u>\$2,036,138</u>	<u>\$34,979,232</u>

*Two-Year Projects (2010 & 2011)

Assumes the following:

- (1) Approval of "turn-in" of three Local Bridge Program bridges from 2010 and re-allocation of funds to Wadhams Road Bridge \$2,045,350 Federal; \$107,650 RC.
- (1) Approval by Local Bridge Advisory Board of \$789,744 Federal; \$210,256 SCCRC for 2012 (to be advanced to 2010).
- (1) Approval of 2010 Appropriation to be used for Construction \$1,080,000 Federal; \$270,000 SCCRC.
- (2) Approval of 2010 Appropriation to be used for Construction Engineering (\$2,232,000 Federal; \$558,000 SCCRC) - Can be "Advance Constructed".

**2010 Surface Preservation
As of January 27, 2010**

PAGE 1 of 2

WBA#	Location	Total	Actual Spent	Remaining Balance	WBA Status
	DISTRICT 1				
	HOT RUBBER				
	Dunigan/Bryce from M-19 to Quain Road	\$ 15,000			
	Riley Center from Belle River to Bordman	\$ 20,000			
	Winn Road from Yale Road to county line	\$ 15,000			
	WEDGING				
	Yale Road from Capac Road to Mason Road	\$ 25,000			
	1-1/2" OVERLAY				
	Bordman Road from west Memphis City Limits to Deland Road	\$ 178,216			
	TOTAL DISTRICT 1	\$ 253,216			
	DISTRICT 2				
	HOT RUBBER				
	Lapeer Road from Kilgore to M-19	\$ 17,500			
	Lapeer Road from Taylor to Wadhams Road	\$ 9,500			
	North River Road from Lightle to Wadhams Road	\$ 9,500			
	Yale Road from Arendt to Collins	\$ 13,500			
	WEDGING				
	Brott/Imlay City Roads at Abbotsford Road	\$ 25,000			
	MICRO SURFACING				
	Vincent from Wadhams to M-136	\$ 115,000			
	TOTAL DISTRICT 2	\$ 190,000			
	DISTRICT 3				
	HOT RUBBER				
	Bauman Road from Gratiot to Crawford	\$ 10,000			
	Fitz Road from Alpine to Smiths Creek Road	\$ 9,000			
	Range Road from Ashley to Gratiot	\$ 13,000			
	Wadhams Road from Dove to I-69	\$ 18,000			

**2010 Surface Preservation
As of January 27, 2010**

PAGE 2 of 2

WBA#	Location	Total	Actual Spent	Remaining Balance	WBA Status
	WEDGING				
	To be determined	\$ 25,000			
	CRUSH & SHAPE				
	Krafft Road from Parker Road west	\$ 100,000			
	TOTAL DISTRICT 3	\$ 175,000			
	DISTRICT 4				
	HOT RUBBER				
	Marine City Hwy. from Indian Trail to Starville	\$ 16,000			
	Marine City Hwy. from Hessen to County Line	\$ 34,000			
	WEDGING & PATCH				
	Marsh Road from Short Cut to Shea Road	\$ 12,500			
	Shea Road from Starville to Mayer Road	\$ 12,500			
	1-1/2" OVERLAY				
	Indian Trail from Belle River Road to Meisner Road	\$ 135,515			
	TOTAL DISTRICT 4	\$ 210,515			
	Grand Total	\$ 828,731			
	Budget	\$ 850,000			
	Balance	\$ 21,269			

2010 Local Road Funding Assistance Program

<u>Class</u>	<u>Township</u>	<u>Location</u>	<u>Description</u>	<u>Project Cost</u>	<u>Funding</u>	
					<u>Township</u>	<u>LRFAP</u>
Surface Preservation	Port Huron	Atkins - Clyde Twp Line to Beach	Wedge and Ultra-Thin HMA Resurfacing	\$95,887	\$59,000	\$36,887
	Port Huron	Strawberry - West Water to end	Ultra-Thin HMA resurfacing	<u>\$83,757</u>	<u>\$51,500</u>	<u>\$32,257</u>
	Totals			\$179,644	\$110,500	\$69,144

Heavy Maintenance	Burtchville	State - Burtch to Harris	HMA resurfacing	\$194,652	\$97,326	\$97,326
	Burtchville	Harris - State to M-25	HMA resurfacing	\$102,400	\$51,200	\$51,200
	China	Indian Trail - St. Clair Hwy to Puttygut	HMA resurfacing	\$114,745	\$57,373	\$57,373
	China	White Pines Sul Mill & resurface		\$122,162	\$61,081	\$61,081
	East China	Rochelle/ Parkridge/ Aspen Ct	Base replace, HMA paving/resurfacing	\$100,630	\$50,315	\$50,315
	Fort Gratiot	State - S of Cole to Metcalf	Crush, Shape, HMA Resurface	\$200,000	\$100,000	\$100,000
Totals			\$834,589	\$417,295	\$417,295	
Grand Total			\$1,014,233	\$527,795	\$486,439	

65% Mileage
35% Population

ST. CLAIR COUNTY ROAD COMMISSION
2010 MATCH MONEY PROGRAM

Prepared
01/18/10

Township	Local Road Miles	Popul	Local Rd.Ml. Amount	Popul Amount	Match Money Share 50%	Township Share 50%	Total Match 100%
Berlin	54.13	3,270	\$19,975	\$6,321	\$26,296	\$26,296	\$52,592
Brockway	46.32	2,063	\$17,093	\$3,988	\$21,081	\$21,081	\$42,161
Burtchville	30.43	3,885	\$11,229	\$7,510	\$18,739	\$18,739	\$37,478
Casco	47.33	4,597	\$17,465	\$8,886	\$26,352	\$26,352	\$52,704
China	53.62	3,552	\$19,787	\$6,866	\$26,653	\$26,653	\$53,306
Clay	41.63	9,501	\$15,362	\$18,366	\$33,728	\$33,728	\$67,457
Clyde	42.63	5,345	\$15,731	\$10,332	\$26,063	\$26,063	\$52,127
Columbus	51.65	4,779	\$19,060	\$9,238	\$28,298	\$28,298	\$56,596
Cottrellville	33.53	3,866	\$12,373	\$7,473	\$19,846	\$19,846	\$39,693
East China	16.67	3,925	\$6,151	\$7,587	\$13,739	\$13,739	\$27,478
Emmett	44.47	2,478	\$16,410	\$4,790	\$21,200	\$21,200	\$42,401
Fort Gratiot	39.96	11,127	\$14,746	\$21,510	\$36,255	\$36,255	\$72,511
Grant	43.62	1,860	\$16,096	\$3,596	\$19,692	\$19,692	\$39,384
Greenwood	47.32	1,667	\$17,462	\$3,222	\$20,684	\$20,684	\$41,368
Ira	27.80	7,167	\$10,259	\$13,855	\$24,113	\$24,113	\$48,226
Kenockee	49.76	2,568	\$18,362	\$4,964	\$23,326	\$23,326	\$46,653
Kimball	66.77	9,279	\$24,639	\$17,937	\$42,576	\$42,576	\$85,153
Lynn	47.07	1,386	\$17,369	\$2,679	\$20,049	\$20,049	\$40,098
Mussey	48.06	2,276	\$17,735	\$4,400	\$22,135	\$22,135	\$44,269
Port Huron	50.04	10,712	\$18,465	\$20,707	\$39,173	\$39,173	\$78,346
Riley	57.63	3,247	\$21,266	\$6,277	\$27,543	\$27,543	\$55,086
St. Clair	58.79	6,837	\$21,694	\$13,217	\$34,911	\$34,911	\$69,822
Wales	57.64	3,247	\$21,270	\$6,277	\$27,547	\$27,547	\$55,093
Totals	1,056.87	108,634	\$390,000	\$210,000	\$600,000	\$600,000	\$1,200,000

*An additional \$150,000 will be shared among the twps participating in paying for the CDA program.

65% Mileage
35% Population

ST. CLAIR COUNTY ROAD COMMISSION
DRAIN PROGRAM
2010

Prepared
01/18/10

Township	Local Road Miles	Popul	Local Rd.Ml. Amount	Popul Amount	Match Money Share 50%	Township Share 50%	Total Match 100%
Berlin	54.13	3,270	\$1,665	\$527	\$2,191	\$2,191	\$4,383
Brockway	46.32	2,063	\$1,424	\$332	\$1,757	\$1,757	\$3,513
Burtchville	30.43	3,885	\$936	\$626	\$1,562	\$1,562	\$3,123
Casco	47.33	4,597	\$1,455	\$741	\$2,196	\$2,196	\$4,392
China	53.62	3,552	\$1,649	\$572	\$2,221	\$2,221	\$4,442
Clay	41.63	9,501	\$1,280	\$1,531	\$2,811	\$2,811	\$5,621
Clyde	42.63	5,345	\$1,311	\$861	\$2,172	\$2,172	\$4,344
Columbus	51.65	4,779	\$1,588	\$770	\$2,358	\$2,358	\$4,716
Cottrellville	33.53	3,866	\$1,031	\$623	\$1,654	\$1,654	\$3,308
East China	16.67	3,925	\$513	\$632	\$1,145	\$1,145	\$2,290
Emmett	44.47	2,478	\$1,368	\$399	\$1,767	\$1,767	\$3,533
Fort Gratiot	39.96	11,127	\$1,229	\$1,792	\$3,021	\$3,021	\$6,043
Grant	43.62	1,860	\$1,341	\$300	\$1,641	\$1,641	\$3,282
Greenwood	47.32	1,667	\$1,455	\$269	\$1,724	\$1,724	\$3,447
Ira	27.80	7,167	\$855	\$1,155	\$2,009	\$2,009	\$4,019
Kenockee	49.76	2,568	\$1,530	\$414	\$1,944	\$1,944	\$3,888
Kimball	66.77	9,279	\$2,053	\$1,495	\$3,548	\$3,548	\$7,096
Lynn	47.07	1,386	\$1,447	\$223	\$1,671	\$1,671	\$3,341
Mussey	48.06	2,276	\$1,478	\$367	\$1,845	\$1,845	\$3,689
Port Huron	50.04	10,712	\$1,539	\$1,726	\$3,264	\$3,264	\$6,529
Riley	57.63	3,247	\$1,772	\$523	\$2,295	\$2,295	\$4,591
St. Clair	58.79	6,837	\$1,808	\$1,101	\$2,909	\$2,909	\$5,818
Wales	57.64	3,247	\$1,772	\$523	\$2,296	\$2,296	\$4,591
Totals	1,056.87	108,634	\$32,500	\$17,500	\$50,000	\$50,000	\$100,000

ST. CLAIR COUNTY ROAD COMMISSION

2010 BUDGET

PROGRAMS ON THE PRIMARY ROAD SYSTEM

1. **Bridge Maintenance Program** \$300,000

This is the twelfth year of this program and provides for performance of work in maintaining structural integrity. Staff will determine needs and direct appropriate funding.

2. **Aggregate Roads/250 tons per mile** \$375,000

This program is in its twelfth year. To assist in improving the condition of the road system, primary aggregate roads will receive an average of 250 tons per mile of aggregate.

4. **Ditching and Crossroad Culverts** \$125,000

This program was established to improve drainage and the replacement of low load rated culverts on the primary road system. Staff will determine needs and direct appropriate funding.

ST. CLAIR COUNTY ROAD COMMISSION

2010 BUDGET

PROGRAMS ON THE LOCAL ROAD SYSTEM

1. **Bridge Maintenance Program** \$ 100,000

This is the twelfth year for this program that provides for performance of work that assists in maintaining structural integrity. Staff will determine needs and direct funding.

2. **Road Sign Replacement** \$ 25,000

This program originated as a five-year program which was completed in 2002. This program has been reduced to an amount that allows for necessary replacement or upgrading.

3. **Funding Assistance Program** \$1,000,000

This is the twelfth year for this program. This program allows townships to apply and compete for construction matching funds on a 50/50 basis to a maximum of \$100,000 per project.

4. **Drainage Program** \$ 100,000

This program was formerly known as the Berm Fund. It assists townships in performing projects that promote drainage of roadways (such as ditching, berm removal, etc.), using a 50/50 matching formula.