

Legend

- Interstate Route
- Roads
- Perennial River or Stream
- Intermittent Stream or Drain
- Existing Railroad
- Open Water
- Proposed Road
- Proposed Structure
- Proposed road/rail closure
- Median
- Truck Apron
- Cul-de-sac
- Turn Around

- Proposed Relocated Railroad
- Toe of Slope
- Proposed Traffic Signal

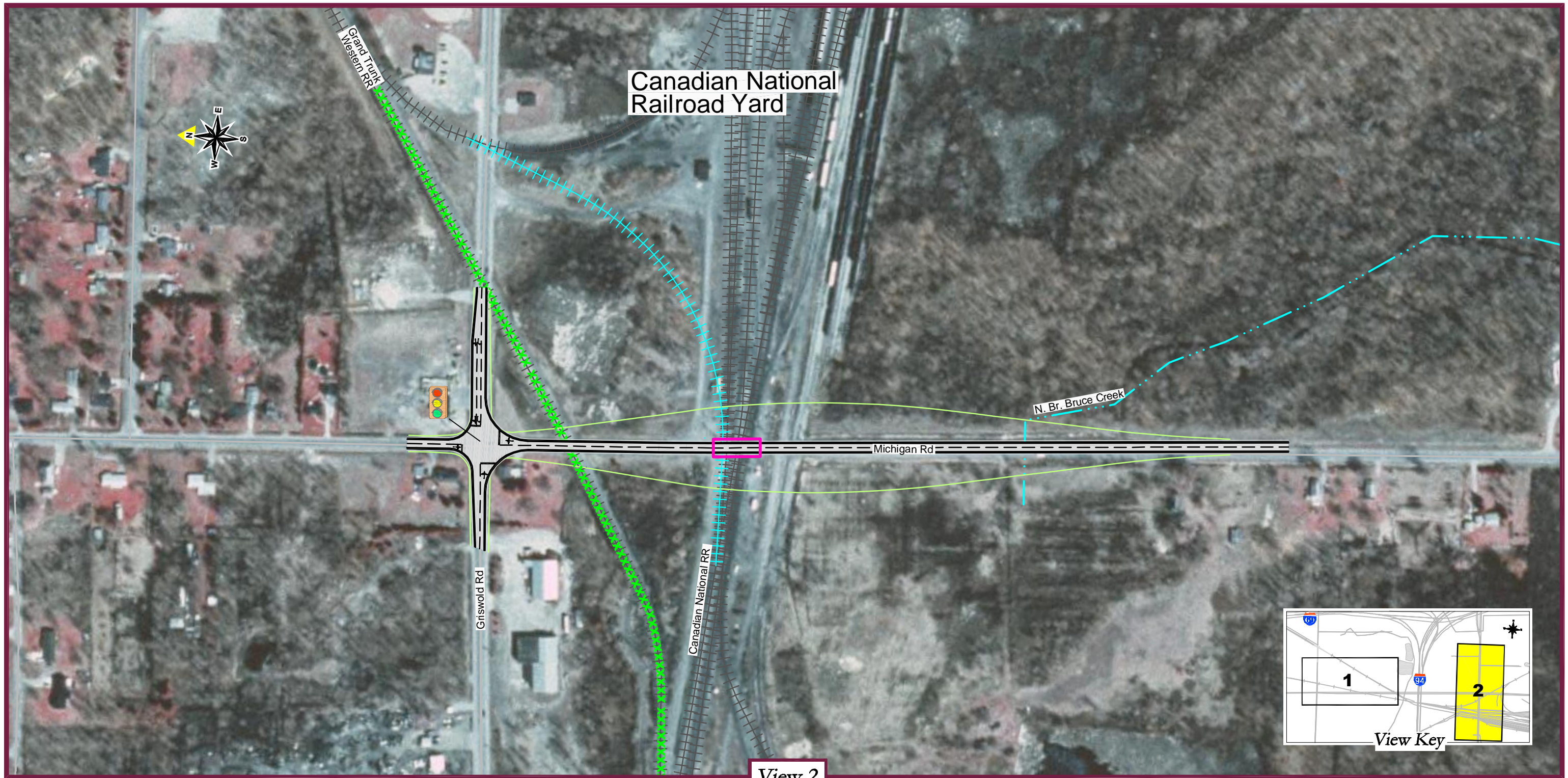
Notes:
 1. These Alternatives could include the use of Intelligent Transportation Systems (I.T.S.) such as signs to direct traffic around train delays.

Sources:
 Aerial Photo - 2001 MDOT
 Map Features - MIRIS Data for St. Clair County
 USGS 7.5 Minute Quadrangle Maps (Smith Creek NE, Port Huron NW)

Figure 21
 Recommended Alternative

Sheet 1 of 2

Canadian National Rail Corridor Feasibility Study
 St. Clair County Road Commission
 Canadian National Railway Company



Canadian National
Railroad Yard

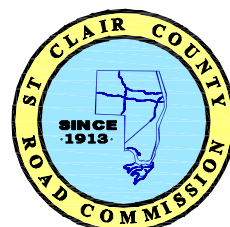
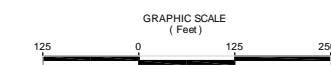
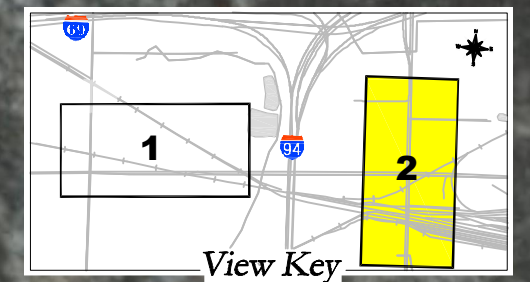
Michigan Rd

N. Br. Bruce Creek

Gritswold Rd

Canadian National RR

View 2



Legend

- Interstate Route
- Roads
- Perennial River or Stream
- Intermittent Stream or Drain
- Existing Railroad
- Open Water

- Proposed Road
- Proposed Structure
- Proposed road/rail closure
- Median
- Truck Apron
- Cul-de-sac
- Turn Around

- Proposed Relocated Railroad
- Toe of Slope
- Proposed Traffic Signal

Notes:

1. These Alternatives could include the use of Intelligent Transportation Systems (I.T.S.) such as signs to direct traffic around train delays.

Sources:
Aerial Photo - 2001 MDOT
Map Features - MIRIS Data for St. Clair County
USGS 7.5 Minute Quadrangle Maps (Smith Creek NE, Port Huron NW)

Figure 21
Recommended Alternative